

BALDOR® • RELIANCE 

Product Information Packet

UCME1014

10-14 AIR OVERHP,3450RPM,3PH,60HZ,215Z,3

Part Detail							
Revision:	K	Status:	PRD/A	Change #:		Proprietary:	No
Type:	AC	Elec. Spec:	37WGY842	CD Diagram:	CD0005	Mfg Plant:	
Mech. Spec:	37N422	Layout:	37LYN422	Poles:	02	Created Date:	03-07-2014
Base:	RG	Eff. Date:	10-22-2019	Leads:	9#14 32" long		Y

Specs			
Catalog Number:	UCME1014	Heater Indicator:	No Heater
Enclosure:	TEAO	Insulation Class:	F
Frame:	215Z	Inverter Code:	Not Inverter
Frame Material:	Steel	KVA Code:	H
Output @ Frequency:	10.000 HP @ 60 HZ	Lifting Lugs:	Standard Lifting Lugs
	14.000 HP @ 60 HZ	Locked Bearing Indicator:	Locked Bearing
Synchronous Speed @ Frequency:	3600 RPM @ 60 HZ	Motor Lead Quantity/Wire Size:	9 @ 14 AWG
Voltage @ Frequency:	460.0 V @ 60 HZ	Motor Lead Exit:	Pipe Or Pipe Adaptor
	230.0 V @ 60 HZ	Motor Lead Termination:	Flying Leads
	208.0 V @ 60 HZ	Motor Type:	3734M
XP Class and Group:	None	Mounting Arrangement:	F1
XP Division:	Not Applicable	Product Family:	General Purpose
Agency Approvals:	CSA	Product Type:	FARM DUTY
	UR	Pulley End Bearing Type:	Sealed Bearing
Auxillary Box:	No Auxillary Box	Pulley Face Code:	Standard
Auxillary Box Lead Termination:	None	Pulley Shaft Indicator:	Tapped & Key
Base Indicator:	Rigid	Rodent Screen:	None
Bearing Grease Type:	Polyrex EM (-20F +300F)	RoHS Status:	ROHS COMPLIANT

Blower:	None	Shaft Extension Location:	Pulley End
Current @ Voltage:	35.000 A @ 208.0 V	Shaft Ground Indicator:	No Shaft Grounding
	33.000 A @ 230.0 V	Shaft Rotation:	Reversible
	16.500 A @ 460.0 V	Shaft Slinger Indicator:	Shaft Slinger
Design Code:	B	Speed Code:	Single Speed
Drip Cover:	No Drip Cover	Motor Standards:	NEMA
Duty Rating:	CONT	Starting Method:	Direct on line
Electrically Isolated Bearing:	Not Electrically Isolated	Thermal Device - Bearing:	None
Feedback Device:	NO FEEDBACK	Thermal Device - Winding:	Normally Closed Thermostat
Front Face Code:	Standard	Vibration Sensor Indicator:	No Vibration Sensor
Front Shaft Indicator:	None	Winding Thermal 1:	None
		Winding Thermal 2:	None

Nameplate NP1279L										
CAT.NO.	UCME1014									
SPEC.	37N422Y842G1									
HP	10-14 AIR OVER									
VOLTS	208-230/460									
AMP	35-33/16.5									
RPM	3450									
FRAME	215Z			HZ	60			PH	3	
SER.F.	1.00			CODE	H		DES	B	CL	F
NEMA-NOM-EFF				PF						
RATING	40C AMB-CONT									
CC							USABLE AT 208V	35		
DE	6307			ODE	6206					
ENCL	TEAO			SN						

Nameplate NP3114L										
CAT.NO.	UCME1014									
SPEC.	37N422Y842G1									
HP	10-14 AIR OVER									
VOLTS	208-230/460									
AMP	35-33/16.5									
RPM	3450									
FRAME	215Z			HZ	60		PH	3		
SER.F.	1.00			CODE	H	DES	B	CL	F	
NEMA-NOM-EFF				PF						
RATING	40C AMB-CONT									
CC				USABLE AT 208V			35			
DE	6307			ODE	6206					
ENCL	TEAO			SN						

Parts List		
Part Number	Description	Quantity
SA277563	SA 37N422Y842G1	1.000 EA
RA264113	RA 37N422Y842G1	1.000 EA
HW3200A01	3/8-16X3/4 I-BLT WELDED F/S	1.000 EA
HA6011A01	ADAPTOR, MACH	1.000 EA
36GS5001	GASKET CONDUIT ADAPTOR	1.000 EA
51XF2520A10	SCREW, HEX SER SLT HD, ZN, 1/4-20 X .62	2.000 EA
51XT0832G06	8-32 X 7/16 TY23 HXWS SLDSR GR	1.000 EA
HW3001B01	BRASS CUP WASHER, FOR #10 SCREW	1.000 EA
37EP3101C08	FR ENDPLATE, MACH	1.000 EA
HW5100A06	W2420-025 WVY WSHR (WB)	1.000 EA
37PE3100A92	PUEP ASSEMBLY FOR ROUTING PURPOSES	1.000 EA
HW4600B51	SEAL 1.375 X 2.125 X 0.313 SINGLE LIP DB	1.000 EA
10XN2520A28	1/4-20X 1 3/4 HEX HD	4.000 EA
HW1001A25	LOCKWASHER 1/4, ZINC PLT .493 OD, .255 I	4.000 EA
XY3118A12	5/16-18 HEX NUT DIRECTIONAL SERRATION	4.000 EA
HW4600B31SP	V-RING SLINGER 1.438 X 1.758 X .24 VITON	1.000 EA
HW2501E18	KEY, 1/4 SQ X 2.000	1.000 EA
HA7000A02	KEY RETAINER RING, 1 1/8 DIA, 1 3/8 DIA	1.000 EA
85XU0407S04	4X1/4 U DRIVE PIN STAINLESS	2.000 EA
LB1115N	LABEL,LIFTING DEVICE (ON ROLLS)	1.000 EA
LD5000A45	LEAD ASSY, ML1400DF10 W/#10 RING 36"	1.000 EA
MJ1000A02	GREASE, MOBIL POLYREX EM - 124047	0.050 LB
MG1025C02	WILKOFASST SG, 787.105, TAN	0.028 GA
HA3104A14	THRUBOLT- 5/16-18 X12.125(OHIO)	4.000 EA

Parts List (continued)		
Part Number	Description	Quantity
LB1119N	WARNING LABEL	1.000 EA
LC0145B01	CONNECTION LABEL	1.000 EA
NP1279L	ALUM FARM DUTY UL CSA CC	1.000 EA
NP3114L	ALUM FARM DUTY NO LOGO'S CC	1.000 EA
36PA1001	PKG GRP, PRINT PK1017A06	1.000 EA
MN416A01	TAG-INSTAL-MAINT no wire (1200/bx) 3/19	1.000 EA

Accessories		
Part Number	Description	Multiplier
37-3301	C FACE KIT	P1

AC Induction Motor Performance Data

Record # 12585 - Typical performance - not guaranteed values

Winding: 37WGY842-R001	Type: 3734M	Enclosure: TEAO
-------------------------------	--------------------	------------------------

Nameplate Data				460 V, 60 Hz: High Voltage Connection	
Rated Output (HP)	10-14 AIR OVER			Full Load Torque	21.28 LB-FT
Volts	208-230/460			Start Configuration	direct on line
Full Load Amps	35-33/16.5			Breakdown Torque	69.05 LB-FT
R.P.M.	3450			Pull-up Torque	36.52 LB-FT
Hz	60	Phase	3	Locked-rotor Torque	42.6 LB-FT
NEMA Design Code	B	KVA Code	H	Starting Current	122 A
Service Factor (S.F.)	1			No-load Current	4.67 A
NEMA Nom. Eff.	0	Power Factor	0	Line-line Res. @ 25°C	0.776 Ω
Rating - Duty	40C AMB-CONT			Temp. Rise @ Rated Load	
				Locked-rotor Power Factor	34.9
				Rotor inertia	0.311 LB-FT ²

Load Characteristics 460 V, 60 Hz, 14 HP

% of Rated Load	25	50	75	100	125	150
Power Factor	66	83	88	90	91	90
Efficiency	82.9	88.6	89.8	89.5	88.3	86.6
Speed	3574	3552	3527	3499	3467	3429
Line amperes	6.18	9.17	12.66	16.46	20.53	24.92

Performance Graph at 460V, 60Hz, 14.0HP Typical performance - Not guaranteed values

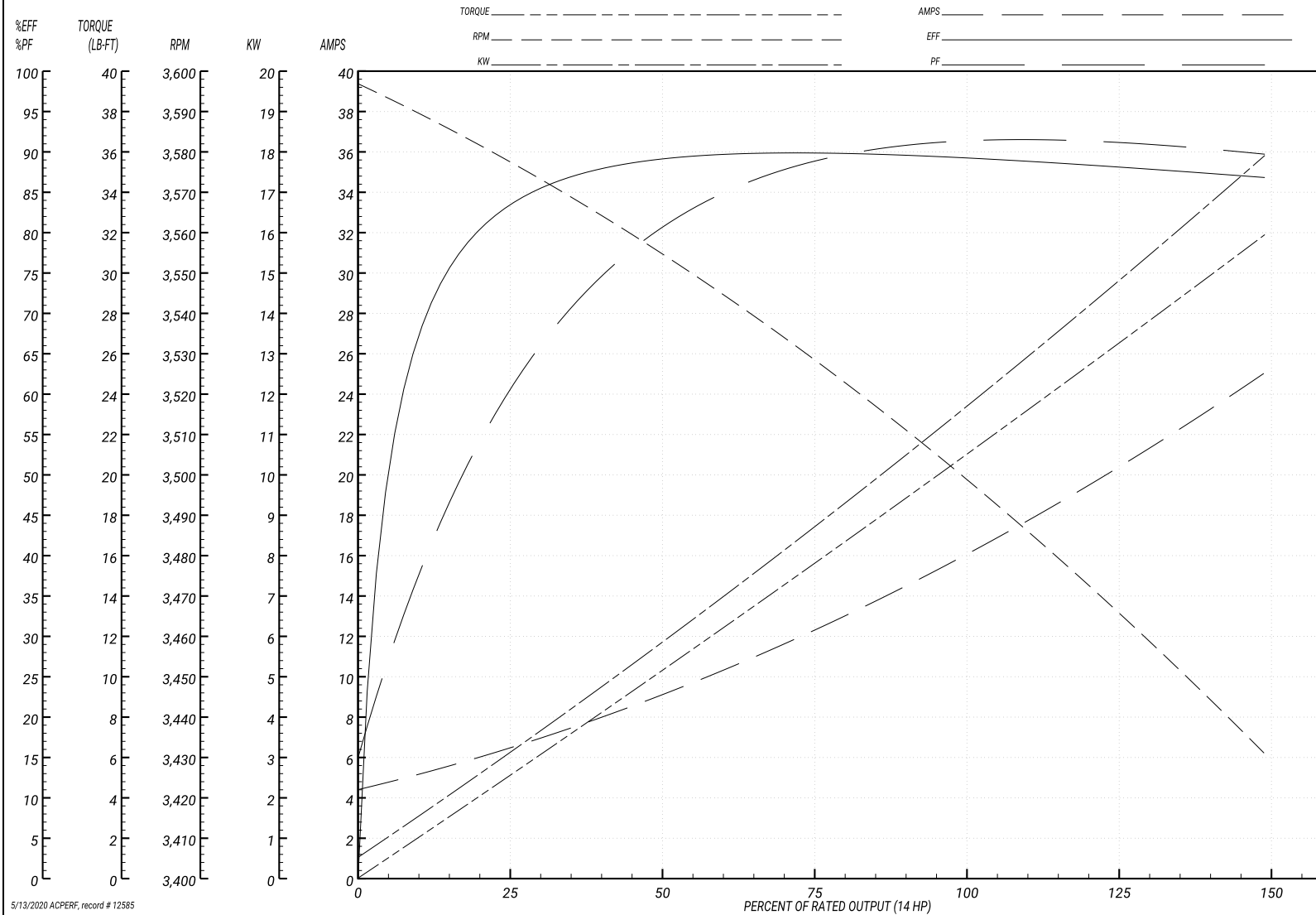
ABB Motors and Mechanical Inc.

WINDING # 37WGY842

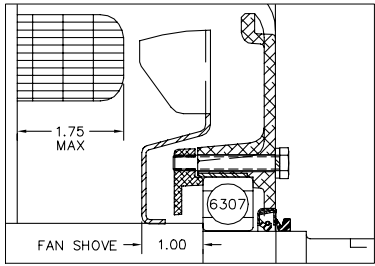
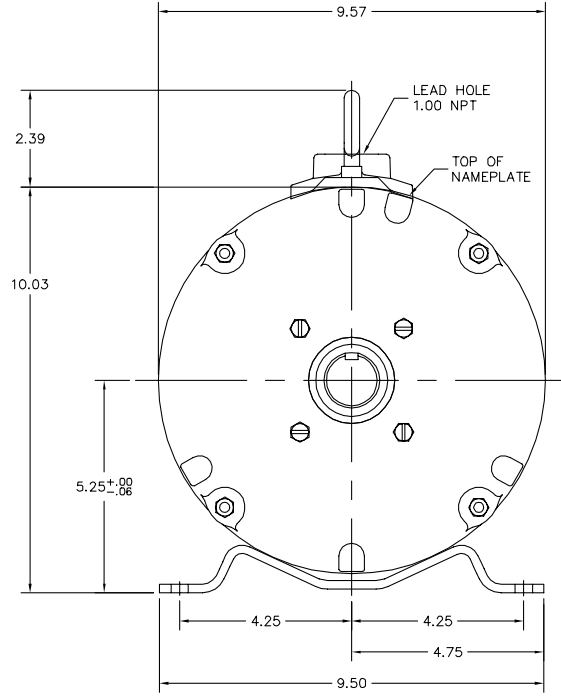
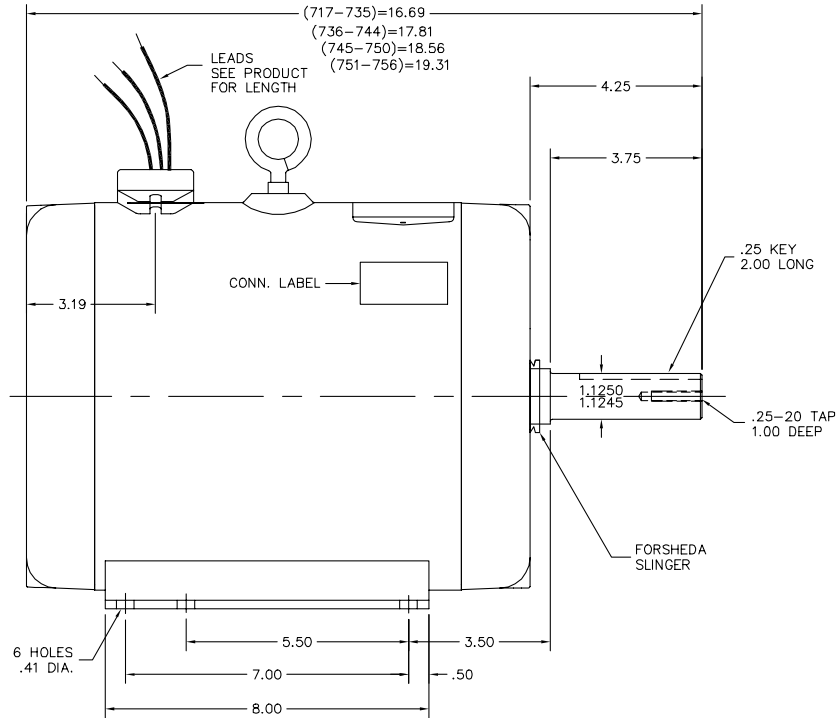
Typical performance - not guaranteed values.

14 HP 3 PH 60 HZ 3450 RPM 460 V 3734M

TORQUES(LB-FT): PO=69.05 PU=36.52 LR=42.6 LRA=122



37LYN422



CUSTOMER IS RESPONSIBLE FOR DETERMINING THAT BALDOR'S PRODUCT WILL PERFORM SUITABLY IN THE INTENDED APPLICATION.

REV. DESC: LEAD LENGTH WAS 32"		
REV. LTR: A	VERSION: 01	TDR: 00001061548
FILE: \AAA\00207\474	REVISED: 11:22:16 02/20/2018	BY: ENBRAMO
MTL: -		

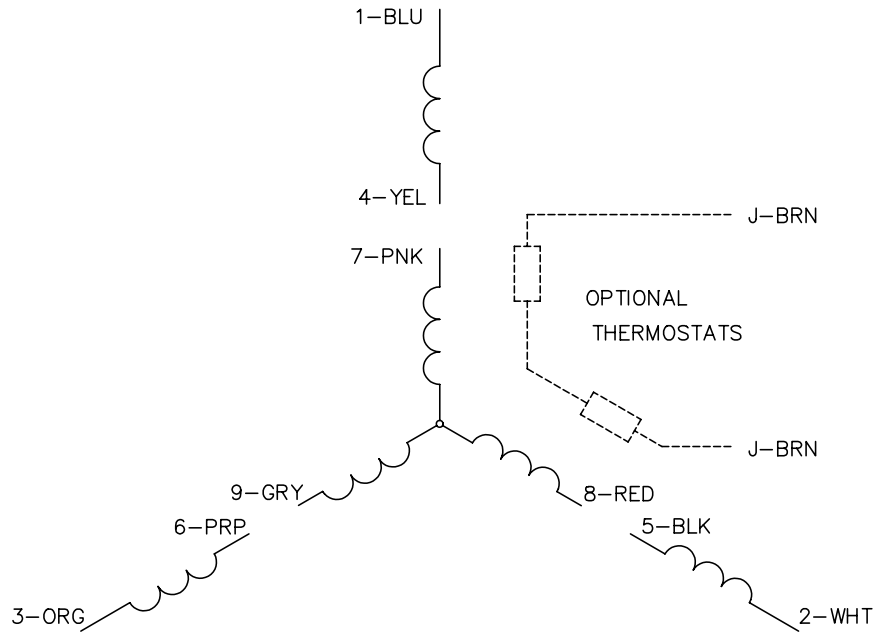
BALDOR

HOR 213-SZ TENV 37M CROP DRYER W/PIPE ADAPTER, T'STAT & SEAL

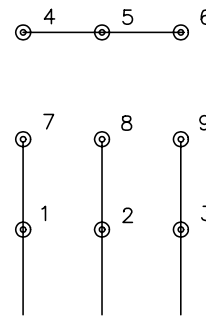
SH 1 of 1

37LYN422

CD0005

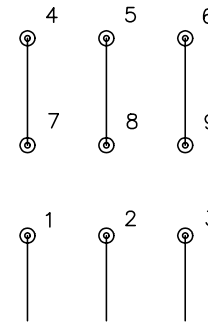


LOW VOLTAGE
(2Y)



LINE

HIGH VOLTAGE
(1Y)



LINE

NOTES:

1. INTERCHANGE ANY TWO LINE LEADS TO REVERSE ROTATION.
2. OPTIONAL THERMOSTATS ARE PROVIDED WHEN SPECIFIED.
3. ACTUAL NUMBER OF INTERNAL PARALLEL CIRCUITS MAY BE A MULTIPLE OF THOSE SHOWN ABOVE.
4. LEAD COLORS ARE OPTIONAL. LEADS MUST ALWAYS BE NUMBERED AS SHOWN.

REV. DESC: REVISE TO SHOW OPTIONAL COLORS			
REV. LTR: E	BY: JLP	REVISED: 01/19/99 10:15	TDR: 0171435
900000		FILE: AAA00005140	MDL: -
		MTL: -	

BALDOR ELECTRIC Co.

3PH, DV, 9 LEADS

CD0005